



C100

Store at room temp

Description:

For the purpose of single colony isolation and further propagation, cloning cylinders or cloning rings are commonly used to isolate the area and apply trypsin to detach the cells and transfer cells to a single well for further propagation. The procedure is stressful and low efficient.

1

CultureApp™ Colony Lifter Card is a piece of sterile polymethylpentene(PMP) sheet that embedded with 48 detachable 5mm PMP discs. It provides a novel method for convenient single colonies isolation and rapid further propagation due to the minor disruption during the process.

Kit contents

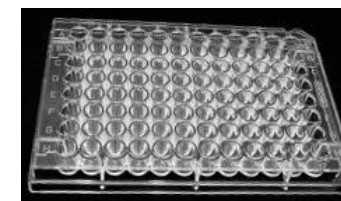
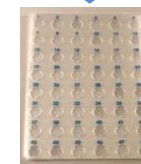
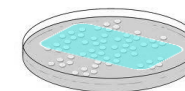
item	description	quantity
CultureApp™ Colony Lifter Cards	In individual autoclaving bags	10

2

Protocol

1. Lay the Colony Lifter card at the bottom of 100 mm diameter culture dish;
2. Culture cells and conduct colony selection procedure;
3. After the appearance of individual colonies, identify the discs that harbor the single colonies under the microscope;
4. Lift the card with a pair of sterile forceps, lay the card over a 96-well-plate, push down the identified discs into underneath wells using sterile pipette tips;
5. Add culture media to wells containing discs;
6. Further propagate the selected colonies.

3



4